

Giving Back.



The second quarter of 2020 was a hugely challenging one for our community as it faced up to the global coronavirus pandemic. During this difficult time, charitable support became more important than ever and the Sure Community Foundation was pleased to be there to help.

The Sure Community Foundation in Guernsey has made more than £210,000 in donations since its inception in 2012 and since the outbreak, Sure donated an additional £27,000 across the seven Sure territories with £22,000 donated to local causes within Guernsey. £12,700 of the donation was raised purely by Sure staff across the business which Sure matched pound for pound.

While we have been experiencing challenging times, we have made a commitment to support even more local charities to help those that need it most. We understand the importance of supporting the local community and, with some charities relying solely on donations and unpaid volunteers, we try to support as many as possible. Take a look at some of the activities the Foundation has been involved with while the island has been in lockdown.



Throughout the current uncertainty, we are especially proud of how hard our staff have worked to help as many charities and causes as possible.



Lions Club Guernsey

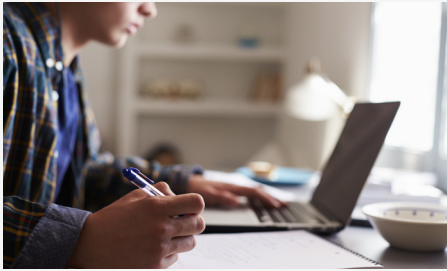
The Lions Club Guernsey is an international network of men and women who work together to answer the needs that challenge communities across the world. To support the charity and allow them to continue while the island was in lockdown we provided the club with free access to Sure's on-demand voice conference service so its members, particularly those who were without smart phones or tablets, were able to continue meetings. To read more about Lions Club of Guernsey click here: <https://www.guernseylions.org.uk/>

Matter.gg

We All Matter Eh? is a local charity that aims to raise awareness and change the way the Guernsey community thinks about disability. Lockdown was hard for many but especially those in our community at home with no access to friends and family. To support this great charity with their #StayConnected initiative, the Foundation provided mobile WiFi to the charity to help vulnerable islanders in residential accommodation who had no ability to stay in touch with friends and family. To find out more about We All Matter Eh? click here: <https://matter.gg/>

Mind Guernsey

The independent charity Mind Guernsey aims to provide the local community with a better understanding of mental health and helps people who are suffering with mental health issues. The Foundation was pleased to support the charity with a donation of £3,240 to provide staff with mobile phones. The charity has been working more hours than usual due to the coronavirus and the phones will be used to connect its staff to the community so it can further its support and help to those that need it most. To read more about Mind Guernsey click here: <https://www.guernseymind.org.gg/>



Children in secondary education

Some junior and secondary school children were without access to the internet while the schools were shut during lockdown, which made it very hard for them to continue their studies. To help these students we were pleased to provide them with free WiFi which ensured they had the same opportunities as other children in their class, and they could stay on top of their work. So far, the Foundation has donated over £7,500 to children's education during lockdown.

Guernsey Welfare service

The Guernsey Welfare Service saw demand triple during lockdown. The independent charity aims to help people in the local community who find themselves in financial need. During lockdown the charity arranged the delivery of food parcels to the homes of those in need who were unable to visit the charity. Bags of food varied according to the size of the household and contained a range of fresh items and cupboard essentials. The charity also offers help with bills and essential items for the home. The Foundation wanted to support the charity while they were working harder than ever and provided them with a donation of £500 to help support the service. Read more about Guernsey Welfare Service here: <https://guernseywelfare.com/>

St Martins Church

While times have been more uncertain than ever, some people struggled while they were unable to attend church. The Foundation provided a free conference call facility to St Martin's Church and Rohais Methodist Church to enable them both to continue their services during lockdown. Both Churches were able to stream their daily and weekend services with St Martin's church holding services to over 120 of its congregation. Click here for more information on St. Martin's Parish Church: <http://www.stmartinschurchguernsey.org/> Or to read more about the Rohais Methodist Church click here: <http://www.methodist.org.gg/churches/rohais/default.aspx>

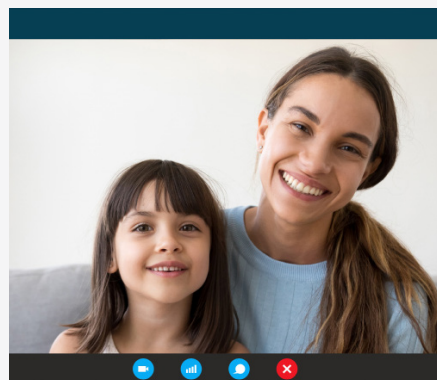
Safer

For some families lockdown was an even harder time than usual. As people were confined to their homes it put vulnerable children, women and men living with domestic violence at greater risk. The charity Safer which aims to provide support for victims of domestic abuse in Guernsey worked hard to support these people as much as possible. The Foundation provided the charity with free phones and Pay As You Go SIMs to help them stay connected during lockdown. To read more about the charity Safer click here: <http://safer.gg/>

MS Society

The MS Society funds research and provides support to people living with multiple sclerosis. The charity was unable to fundraise during lockdown and has only recently been able to reopen its services. To support the charity during this difficult time the Foundation donated £2,280 which will cover the majority of costs for six months of classes at Beau Sejour for people living with MS. To read more about the MS Society click here: <https://www.mssociety.org.uk/>

Our community



The Foundation is proud to have deployed and supported over 109 mobile devices with WiFi during lockdown in Guernsey to low income and vulnerable families who were identified by teams from Education and Health & Social Care. The Foundation

also supported some individuals living in assisted accommodation and struggling with their mental health. They were provided with WiFi to help them stay connected with key family and support networks.

If you would like to get in touch with us about a charitable or community project, contact CommunityFoundation@sure.com

